

## ADC MODEL 220 SERIES CURTAIN TRACK INSTALLATION INSTRUCTIONS FOR MANUALLY OPERATED SYSTEMS

---

- Place operating cord on the floor or workbench.
- Mount the track channel to the ceiling structure.
- Install the live-end pulley (double-wheel pulley) to the track channel securing it loosely.
- Thread one end of the operating cord over one wheel of the live-end-pulley.
- With master carrier “2” outside of track, thread the same end of cord through this master carrier’s cord lock and pull several feet of cord through the lock, but **DO NOT TIGHTEN THE LOCK**.
- Insert master carrier “1” into the track and pull the cord, through the un-tightened cord lock of the carrier, to the other end of the track.
- If the track system incorporates the optional Tandem Carriers (Model 2202T or 2202BT) insert these carrier directly behind the Master Carrier (Refer to Installation Drawings)
- Insert the required amount of single carriers in the track, behind this master carrier, making certain that the cord lies between the carrier wheels and the inner wall of the channel (Refer to accompanying drawings). The cord **DOES NOT** go above the carrier body between the carrier wheels.
- Take the end of cord threaded through Master Carrier “2”, around the wheel of the dead-end pulley (single sheave pulley) and thread this cord through Master Carrier “1”.
- Pull several feet of cord through this Master Carrier’s cord lock. **DO NOT TIGHTEN THE LOCK**.
- Insert Master Carrier “B-1” into the track from the dead-end of the track and slide it at least ½ way down the track section.
- If the track system incorporates the optional Tandem Carrier (Model 2202T or 2202BT) insert these carriers directly behind the Master Carrier (Refer to accompanying drawings).
- Insert required amount of single carriers behind Master Carrier “1” making certain that the cord lies between the carrier wheels and the inner wall of the channel.
- Install the dead-end pulley to the track and secure it loosely.
- Bolt the floor pulley or machine operator in their final position, directly below and in line with the live-end pulley.
- Thread the other end of the cord reel (end not going through track system) around the sheave of the floor pulley or wheel of the machine. Note: for grooved drum equipped machines see instructions “How to install a grooved drum machine”
- Thread the end over the remaining sheave of the live-end pulley, then through the track keeping it between the side of the channel and the wheels of the single carriers.
- Pull Master Carrier “1” through the track channel toward the live-end pulley as far as it will go.
- Thread this cord through the cord lock of Master Carrier “1”. There should now be two (2) cuts ends at this master carrier.
- Remove Slack from operating line and loosely secure at Master Carrier “1” **DO NOT CUT CORD**.
- Slide both master carriers to their overlap positions. Move Master “1” first and then slide Master “2” along the cord while holding Master “1” in place.

**ADC MODEL 220 SERIES CURTAIN TRACK  
INSTALLATION INSTRUCTIONS FOR MANUALLY OPERATED SYSTEMS**

- Remove all slack from system at Master Carrier “1”.
- Make certain that cord is threaded through cord lock properly.
- Tighten cord lock of Master Carrier “1”.
- Tighten cord lock of Master Carrier “2”.
- Secure the live and dead end pulleys of the system.
- Carefully operate the system.
- If system operates as desired, cut excess cord at Master Carrier “1”.

**IMPORTANT**

- ✓ Be certain that the operating cord is placed between the carrier wheels and the inside wall of the track channel.
- ✓ Do not use hex head or large round head screws when installing the track channel. Make certain that the single carriers clear the fastening hardware even when the carriers are tilted about their axle.
- ✓ Support the track properly. If the system is to be suspended, use steel angle, chain or cable. **NEVER USE ROPE TO SUSPEND THE TRACK SYSTEM.**
- ✓ Do not attach the track system directly to a suspended ceiling grid. Provide support member(s) to the structural ceiling above the ceiling grid for the track system.
- ✓ Do not use parts other than those manufactured or suggested by **AUTOMATIC DEVICES COMPANY.**

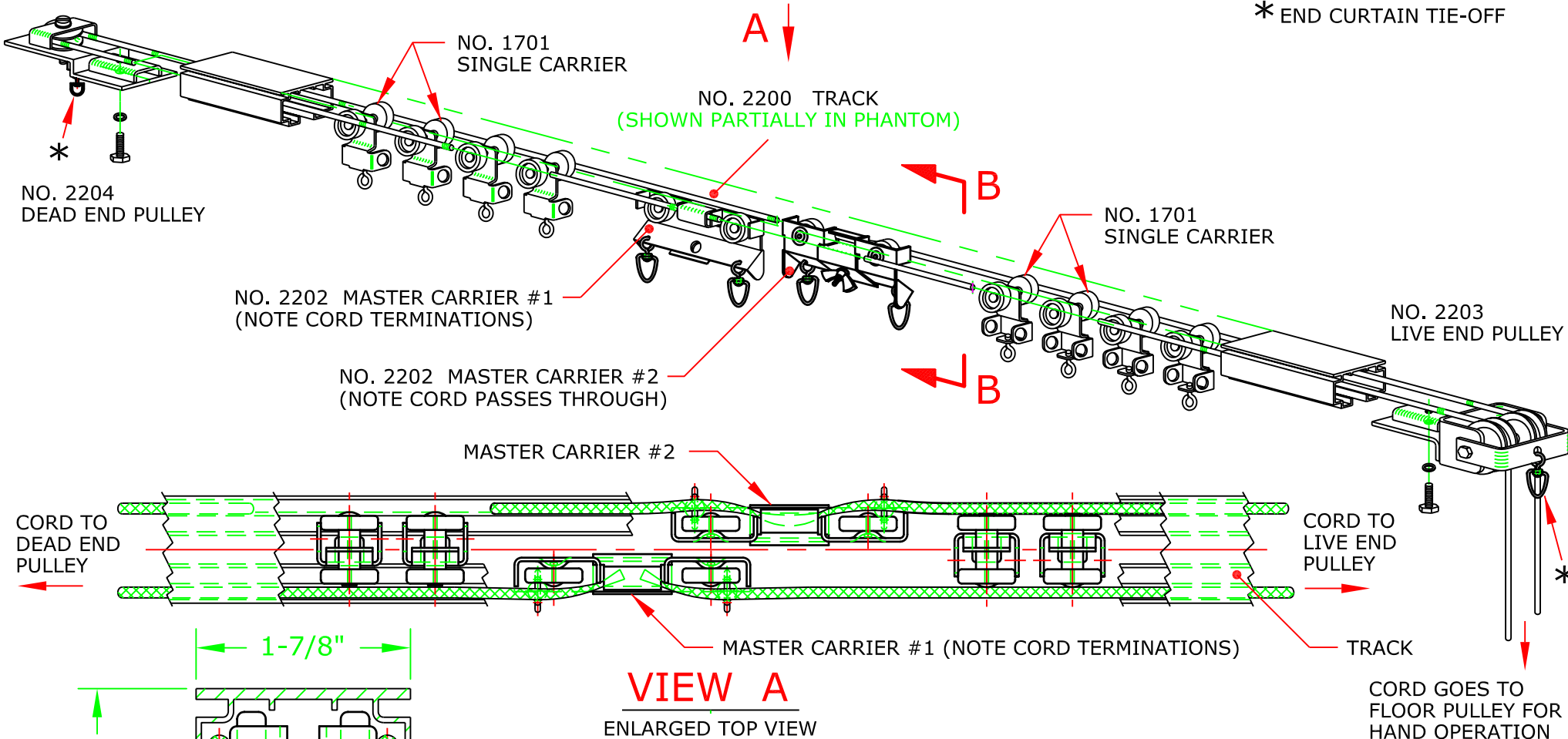
REV.

DATE:

DO NOT USE FOR MACHINE OPERATED TRACKS

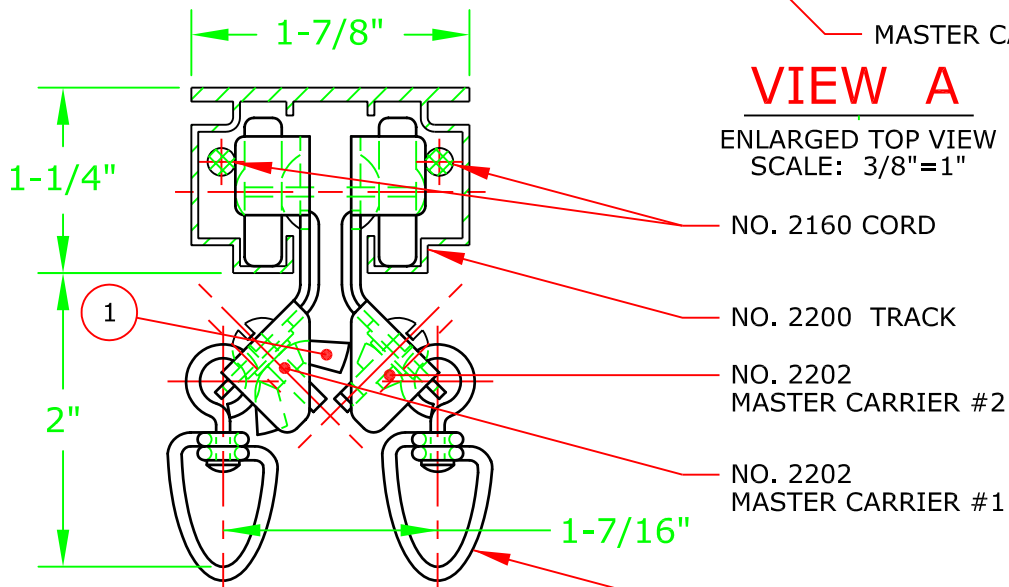
FORM NO.: 220BPHO

\* END CURTAIN TIE-OFF



### VIEW A

ENLARGED TOP VIEW  
SCALE: 3/8"=1"



### SECTION B-B

SCALE: 3/4"=1"

### NOTES:

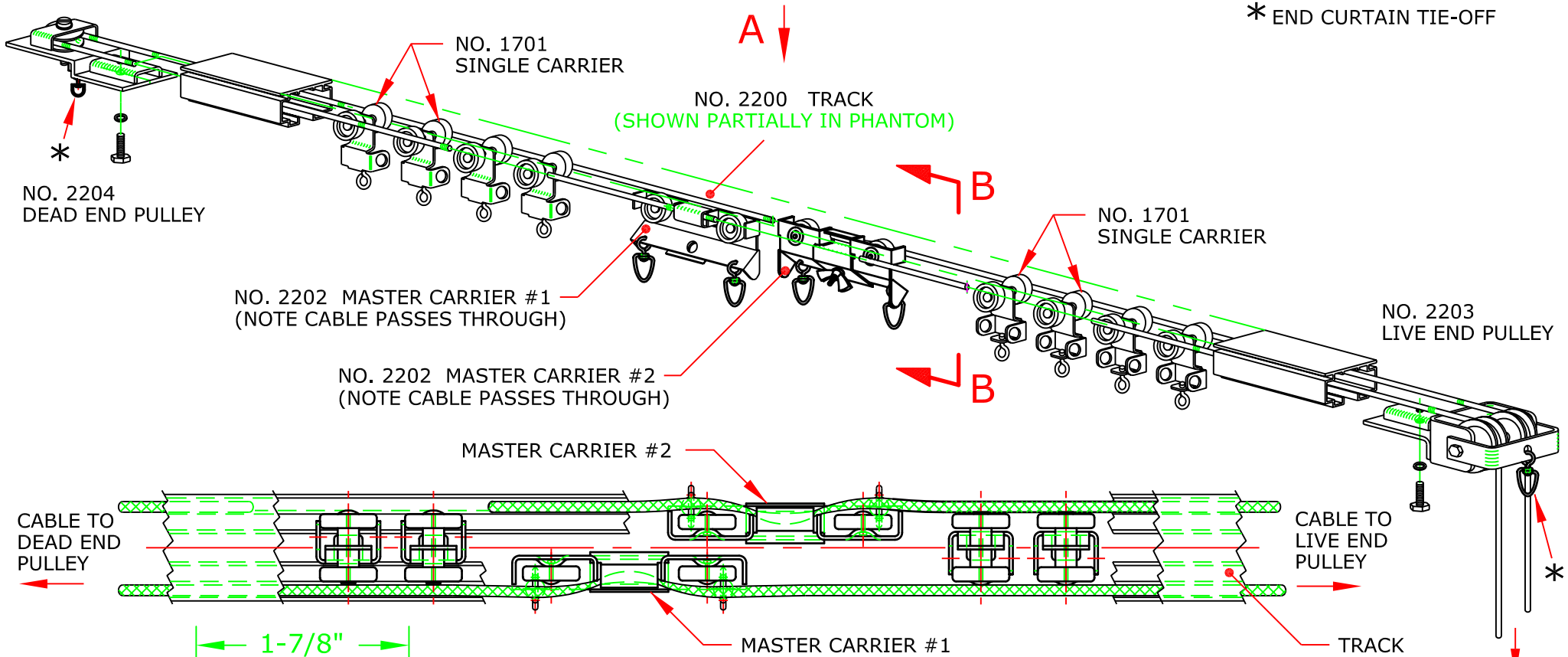
- 1 TURN WING NUTS ON MASTER CARRIERS SO THEY DON'T INTERFERE WITH EACH OTHER.

**ado** AUTOMATIC DEVICES COMPANY  
2121 S. 12TH ST. ALLENTOWN, PA 18103

THIS DRAWING HAS BEEN PREPARED AS A SERVICE TO OUR CUSTOMER AND IS INTENDED ONLY TO BE SUGGESTIVE IN NATURE AND IS NOT TO BE USED AS AN ACTUAL INSTALLATION DRAWING. PREVAILING JOB CONDITIONS AND ACCEPTED PRACTICES MUST BE TAKEN INTO ACCOUNT WHEN THE EQUIPMENT IS INSTALLED.

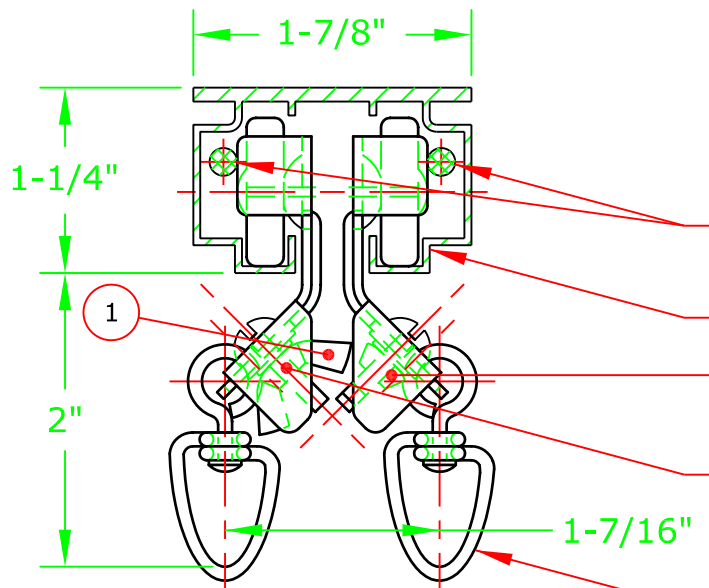
SIZE <b>A</b>	DATE <b>6/19/04</b>	SERIES <b>MODEL 220 TRAK-EZE CURTAIN TRACK</b>
DRAWN BY <b>JEK</b>	APPROVED BY	DESCRIPTION <b>INSTALLATION DRAWING BI-PART OPERATION (MANUAL)</b>
SCALE <b>3/16"=1</b>	SHEET <b>1 OF 1</b>	DWG NO. <b>II-220HOB1-1-04</b>

\* END CURTAIN TIE-OFF



**VIEW A**

ENLARGED TOP VIEW  
SCALE: 3/8"=1"



- NO. 1151 CABLE
- NO. 2200 TRACK
- NO. 2202 MASTER CARRIER #2
- NO. 2202 MASTER CARRIER #1
- SWIVEL EYE TO ATTACH CURTAIN

**SECTION B-B**

SCALE: 3/4"=1"

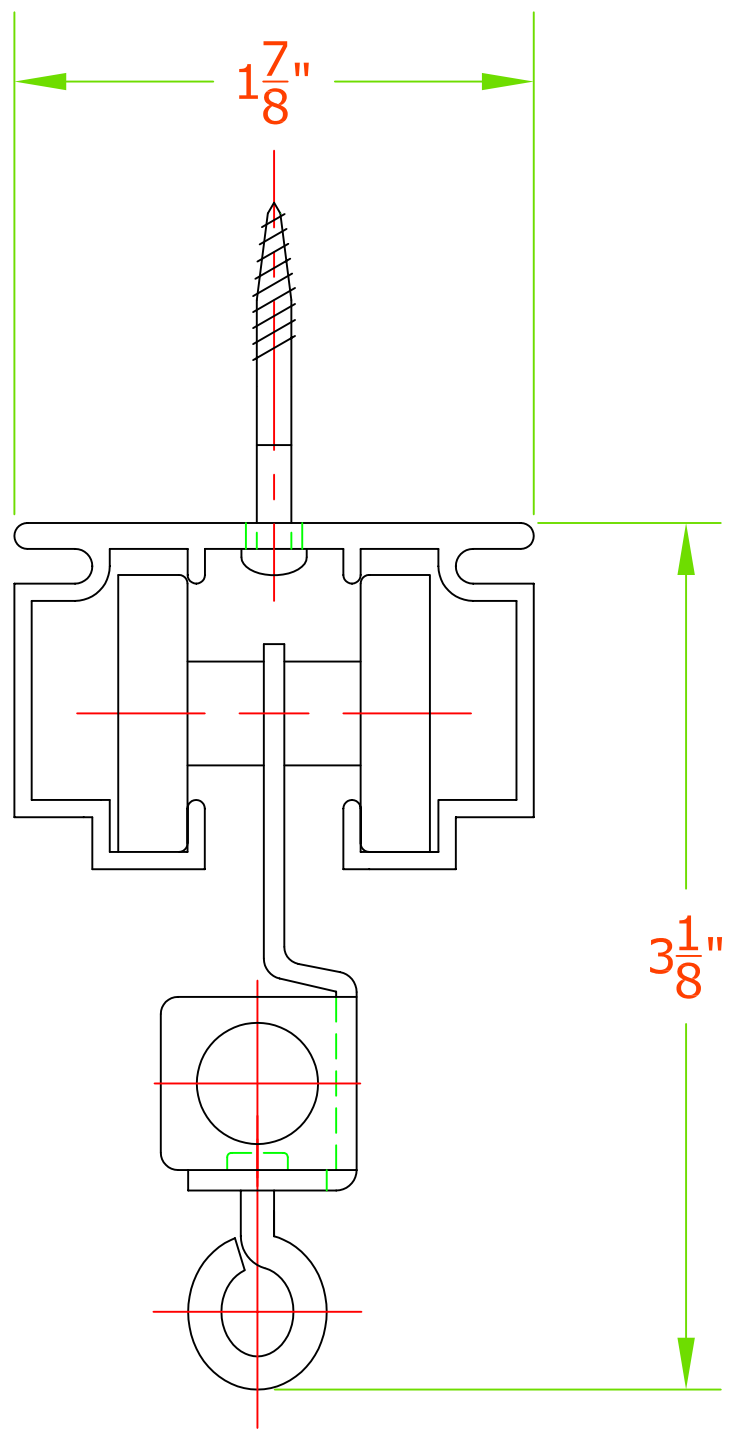
**NOTES:**


- 1 TURN WING NUTS ON MASTER CARRIERS SO THEY DON'T INTERFERE WITH EACH OTHER.

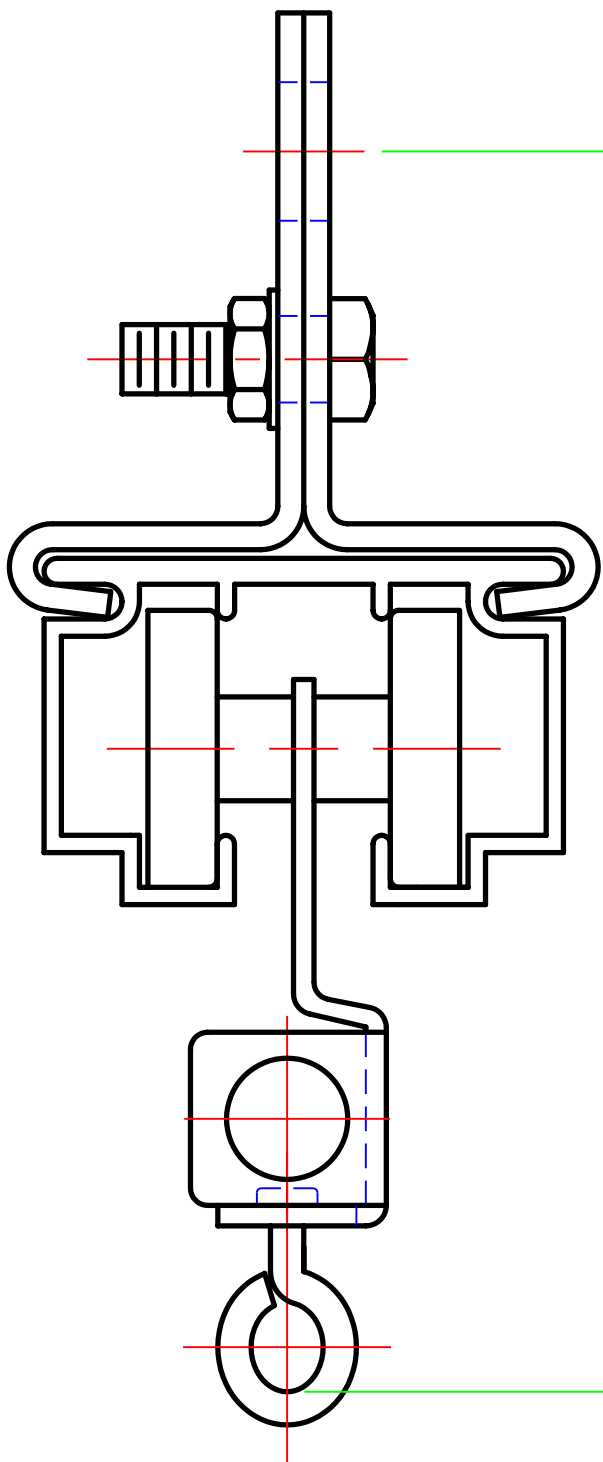
**ado** AUTOMATIC DEVICES COMPANY  
2121 S. 12TH ST. ALLENTOWN, PA 18103

THIS DRAWING HAS BEEN PREPARED AS A SERVICE TO OUR CUSTOMER AND IS INTENDED ONLY TO BE SUGGESTIVE IN NATURE AND IS NOT TO BE USED AS AN ACTUAL INSTALLATION DRAWING. PREVAILING JOB CONDITIONS AND ACCEPTED PRACTICES MUST BE TAKEN INTO ACCOUNT WHEN THE EQUIPMENT IS INSTALLED.

SIZE <b>A</b>	DATE <b>6/19/04</b>	SERIES <b>MODEL 220 TRAK-EZE CURTAIN TRACK</b>
DRAWN BY <b>JEK</b>	APPROVED BY	DESCRIPTION <b>INSTALLATION DRAWING BI-PART OPERATION (MACHINE)</b>
SCALE <b>3/16=1</b>	SHEET <b>1 OF 1</b>	DWG NO. <b>II-220MBI-1-04</b>



		AUTOMATIC DEVICES COMPANY 2121 S. 12TH ST. ALLENTOWN, PA 18103	
THIS DRAWING HAS BEEN PREPARED AS A SERVICE TO OUR CUSTOMER AND IS INTENDED ONLY TO BE SUGGESTIVE IN NATURE AND IS NOT TO BE USED AS AN ACTUAL INSTALLATION DRAWING. PREVAILING JOB CONDITIONS AND ACCEPTED PRACTICES MUST BE TAKEN INTO ACCOUNT WHEN THE EQUIPMENT IS INSTALLED.			
SIZE	DATE	SERIES	
A	8/18/10	MODEL 220 TRAK-EZE	
DRAWN BY	APPROVED BY	DESCRIPTION	
DJL		220 CEILING MOUNT	
SCALE NONE	SHEET 1 OF 1	DWG. NO. CAT-220CEIL-10	

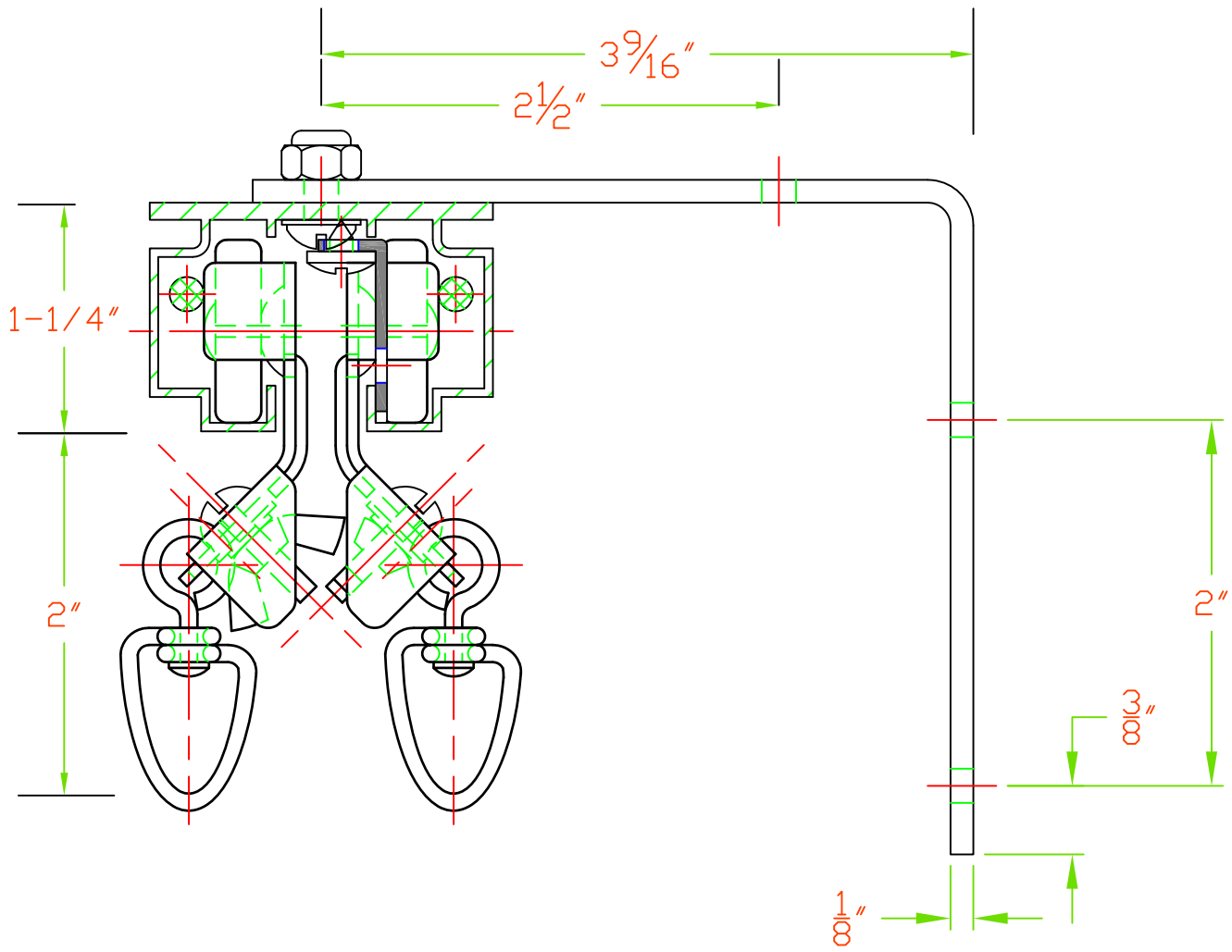


4-1/2"

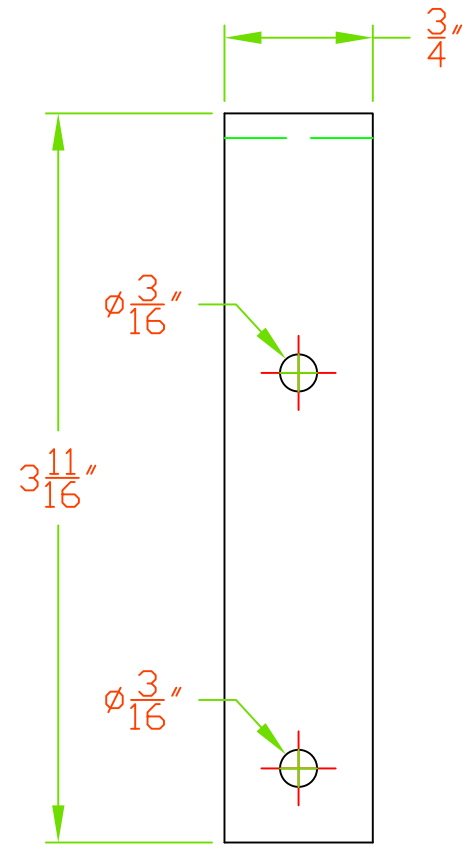
**ade** AUTOMATIC DEVICES COMPANY  
 2121 S. 12TH ST. ALLENTOWN, PA 18103

THIS DRAWING HAS BEEN PREPARED AS A SERVICE TO OUR CUSTOMER AND IS INTENDED ONLY TO BE SUGGESTIVE IN NATURE AND IS NOT TO BE USED AS AN ACTUAL INSTALLATION DRAWING. PREVAILING JOB CONDITIONS AND ACCEPTED PRACTICES MUST BE TAKEN INTO ACCOUNT WHEN THE EQUIPMENT IS INSTALLED.

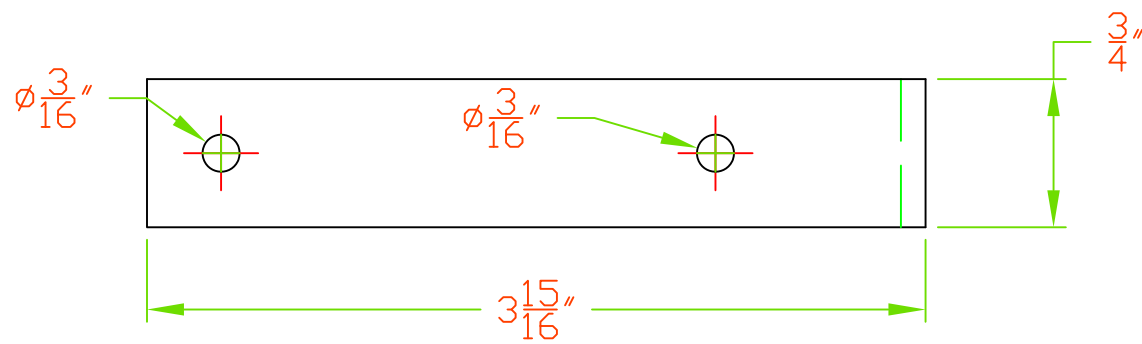
SIZE <b>A</b>	DATE <b>8/26/02</b>	SERIES <b>220</b>
DRAWN BY <b>JEK</b>	APPROVED BY	DESCRIPTION <b>220 SUSPENDED</b>
SCALE <b>NONE</b>	SHEET <b>1 OF 1</b>	DWG. NO. <b>CAT-220SUS-02</b>



FRONT VIEW



SIDE VIEW



TOP VIEW

AUTOMATIC DEVICES COMPANY 2121 S. 12TH ST. ALLENTOWN, PA 18103			
THIS DRAWING HAS BEEN PREPARED AS A SERVICE TO OUR CUSTOMER AND IS INTENDED ONLY TO BE SUGGESTIVE IN NATURE AND IS NOT TO BE USED AS AN ACTUAL INSTALLATION DRAWING. PREVAILING JOB CONDITIONS AND ACCEPTED PRACTICES MUST BE TAKEN INTO ACCOUNT WHEN THE EQUIPMENT IS INSTALLED.			
SIZE	DATE	MODEL 220 TRAC-EZE	REV
A	08/18/10		
DRAWN BY	APPROVED BY	DESCRIPTION	
DJL		PROJECTION BRACKET	
SCALE 1" = 1"	SHEET 1 OF 1	DWG NO. A-2163-10	